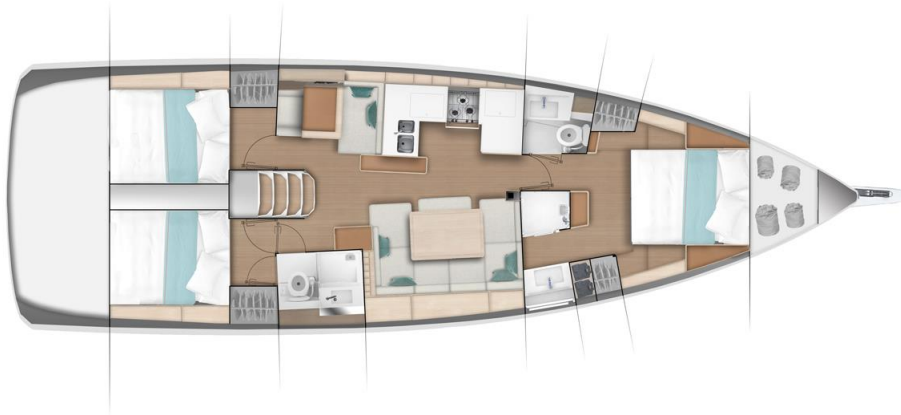


## 2020 Jeanneau 490 After Physics

LOA with bowsprit	48'6"
LWL	43'5"
BEAM	14'8"
DISPLACEMENT	24,890 lbs
Draft (shoal)	5'4"
ENGINE	Yanmar 57 HP/CV (41 kW)
CABINS	3
BERTHS	6 (+2)
Fuel Capacity	63 US Gals
Water Capacity	169 US Gals
Sail Area	1186 Sq Ft



This state of the art Jeanneau has a sleek and beautiful metallic blue-gray hull with white cove and double boot stripes, white decks and light bright oak interior. Ample hatches, ports and deadlights for a clean airy modern interior. Deck hatches are flush; Shoal draft version; 3 blade prop; dual helms; Hydraulic fiberglass/teak Swim platform with swim ladder

### ACCOMMODATIONS & Layout

The Jeanneau 490 sleeps 6 in three cabins with two heads with 2 additional berths if dinette is converted. Forward master has a centerline walk-around queen berth (separate mattresses) with separate (ensuite) vanity/head and shower compartments. Head is electric. Excellent hanging and drawer storage. Two double cabins aft. Nav station is port aft with second dinette/seating area. Galley is forward to port. Second head is starboard aft accessible from salon and starboard cabin

### GALLEY

U shaped galley forward of nav station on port side with deep double sinks, 3 burner LPG stove with oven, propane solenoid switch; large refrigerator with double access from counter and front door and large separate freezer; Microwave (lowers/hides away into flush cabinet), clever flush dish & glass storage cabinets and trash receptacle. Sleek and clean

**SAILS & RIGGING**

In-mast furling mainsail and Roller Furling Genoa led aft to coach roof and helm area stoppers and winches. Electric halyard and sheet winches. Hydraulic Boom vang (?)

**ELECTRICAL Equipment**

Generator  
Air conditioning  
Quick Bow Thruster  
Quick Electric Anchor windlass and chain counter  
Delta anchor on bow sprit roller  
Refrigerator and Freezer

**NAV ELECTRONICS**

Raymarine GPS/Chartplotter/ Radar, autopilot controls both helms  
Raymarine Speed, Depth, Wind instruments and compass between helms  
Engine controls

**ADDITIONAL EQUIPMENT**

Custom Dodger, Bimini and cockpit cushions (cream)  
3 blade propeller  
Single lever engine control at starboard helm  
USCG required safety gear  
Varnished teak cockpit table with drop down flaps both sides and ice box in center; bottle storage  
Drink holders  
AM/FM Stereo/CD player  
Cockpit speakers  
Compass  
Clock and Barometer

LOCATION                      NE Boatworks Marina PORTSMOUTH RI  
WEEKLY RATE                \$7000